

Video Enhancement Unit  powered by Apical Iridix technology.

# SNC-SE01U

Dynamic range compression system for CCTV.

## See like the eye - Retina-Morphic Processing -

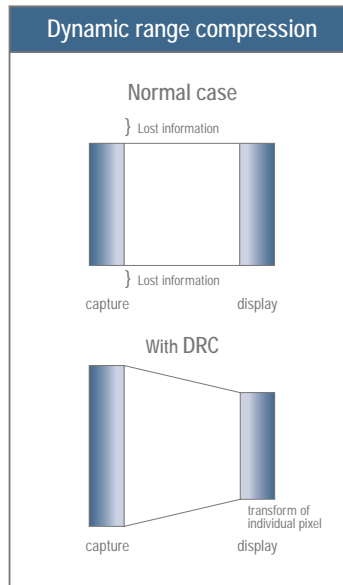
The key aim of Retina-Morphic Processing is to enable an electronic device to see like the human eye, so that users can capture the image they want without careful collaboration.

This is useful for two reasons. First, because we often want images which look close to how we see the world. And secondly because image capture devices have a much higher dynamic range than do displays or printers. Previous techniques, such as gamma correction, lose important scene detail between capture and display, especially in dark areas. In contrast, when our eyes send images to our brain, powerful dynamic range compression is applied by the cells of the retina, resulting in a stream of images of extraordinary quality.

Because Retina-Morphic Processing mimics the way human eye-brain compresses dynamic range, it is a very powerful technique for balancing contrast while always retaining a natural "artefact-free" appearance.

Digital Retina-Morphic Processing is self-adaptive, in other words it analyses each image and creates an individual transformation of the brightness of each pixel. This transformation is non-linear, and varies pixel-by-pixel across the image.

Like the eye, dark regions are enhanced in intensity much more than bright regions-which may sometimes even be reduced in intensity to create optimal balance. This is performed without loss of detail or contrast: transformed images retain pure blacks and whites and show no loss of colour saturation.



**The part of the shadow will be in real time corrected**

Only a dark part in the part of reverse-light / shadow will be corrected brightly and clearly automatically. It is the best for CCTV camera system.

**Easy installation**

SNC-SE01U is only inserted in the CCTV camera back (In front of DVR). All an annoying, complex adjustments are unnecessary.

**Maintenance of original image**

The original image data also secures the output and maintenance by the un-processing data at the same time. Even when the power supply is not supplied, SNC-SE01U keeps sending the image data from original image output I/F.



The part of the reverse-light / shadow will be in real time corrected  
Retina-Morphic Processing mimics the way human eye-brain compresses dynamic range.

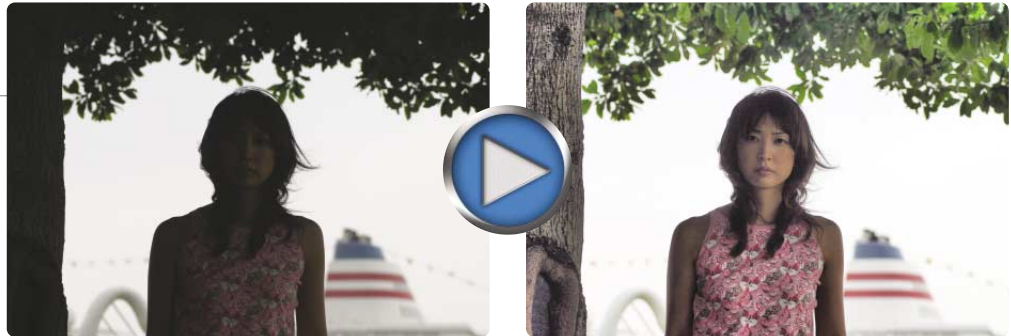
Video Enhancement Unit  powered by Apical Iridix technology.

# SNC-SE01U

Dynamic range compression system for CCTV.

### Example of backlighting compensation of correcting SNC-SE01U

The exposure of the camera is suitable for bright one when the person enters from a bright entrance where sunlight was received, and an essential character darkens.



### Room taking a picture example of correcting SNC-SE01U

It is difficult for the road watch at nighttime to recognize the color and the shape of the car and the character by the difference of the contrast of a light of the car and a dark place.



### Example of correcting Secure Eye of taking a picture of outdoor

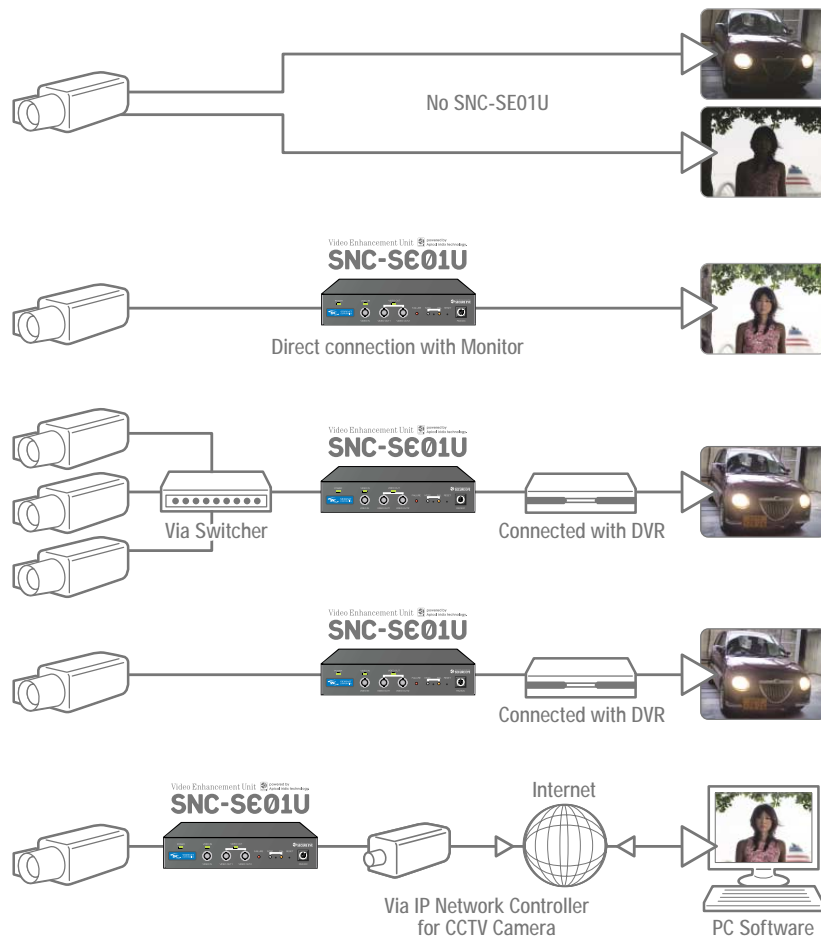
Empty brightness such as evening suns: in the cause in the morning sun and daytime, Dark the building the tree, etc. And reflecting, the color, and recognizing the pattern taking a picture on the day of which it clears up become difficult.



SNC-SE01U method		
Reflection input part	Reflection method	NTSC-N -Japan- / NTSC-M -USA- / PAL-B / D / G / H / I
	Input form	Analog composite
	Input connector	BNC connector
Reflection output part -1 Iridix correction	Reflection method	NTSC-N -Japan- / NTSC-M -USA- / PAL-B / D / G / H / I
	Input form	Analog composite
	Input connecto	BNC connector
part - 2 pass-through	Reflection methodr	NTSC-N -Japan- / NTSC-M -USA- / PAL-B / D / G / H / I
	Input form	Analog composite
	Input connector	BNC connector
Control part	External control	RS-232C -for maintenance such as parameter setting-
	Connected connector	Mini-DIN-9P
Others	Externals size	221mm(W) 145mm(D) 43mm(H) [Only Box]
	Weight	About 0.9kg [Only Box]
	Power-supply voltage	AC100-240V +10% / -15%
	electric power	2.4-3.9W

SNC-SE01U employment	
Ambient temperature	Motion : 0 ~ 40 °c Storage : -20 ~ 60 °c
Humidity	Motion : Humidity 85% RH> (non condensing) Storage : Humidity 85% RH> (non condensing)

SNC-SE01U Connected composition example.



iridix technology is provided by Apical Limited, UK.  
The Apical logo, iridix and Digital Retina-Morphic Processing are trademarks of Apical Limited.



STORENET CORPORATION

KAEDE 2 Bldg. 5F, 2-5-10, Shinyokohama,  
Kouhoku-ku, Yokohama-shi, Kanagawa, 222-0033  
TEL +81-45-476-2935  
FAX +81-45-476-2936  
URL. www.storenet.co.jp

manufacturer | Agent